

EVEREST BAY

449,201 cbft / 5,219 sqm / 3,954 pallets



General

Built	December-1989	International	GT	NT
Flag	Liberia	Panama Canal	8,739.00	4,085.00
Port of Registry	Monrovia	Suez Canal		7,760.00
Callsign	A8KZ3			7,277.96
IMO/Lloyds nr	8911073		Draft	DWAT
Length over all [m]	141.01	Tropical		
Beam [m]	20.60	Summer	8.51	9,687
Depth [m]	13.00	Winter		
Bowthruster(s)	-			

Reefer

Holds	4
Hatches	4
Compartments	19
Minimum Deckheight [m]	2.20 (excl local areas)
Allowable weight of forklift including cargo	maximum 5 mt (Forklift to be equipped with minimum 4 non hard rubber airtyres)
Temperature zones	8
Cooling sections	1UPDA 1BC 2UPDAB 2CD 3UPDAB 3CD 4UPDAB 4CD
Temperature range [dC]	-25/+15
Air circulations [/hr]	90
Air renewals [/hr]	4
USDA equipped	Yes, valid until 30-April-2022
Controlled Atmosphere	None
Modified Atmosphere	No equipment on board



EVEREST BAY

449,201 cbft / 5,219 sqm / 3,954 pallets

Classification Details

Classification Society	Nippon Kaiji Kyokai (NKK)
Classification characters	NS* (EQ CV) / MNS*
Installation characters	RMC*, CHG, MPP, LSA, RCF
Special Description	
Other Classification	
Equivalent Finnish/Swedish	
Ice Strengthening	-

Reefer Compartment Capacity Breakdown

	Hold 1		Hold 2		Hold 3		Hold 4		Total	
	Cbft	Sqm	Cbft	Sqm	Cbft	Sqm	Cbft	Sqm	Cbft	Sqm
UPD	6,457	70.00	7,737	85.00	7,777	85.00	7,824	85.00	29,795	325.00
A	25,494	277.00	32,634	401.00	29,856	370.00	31,808	395.00	119,792	1,443.00
B	18,572	201.00	31,630	373.00	29,492	350.00	31,858	374.00	111,552	1,298.00
C	15,629	179.00	30,027	353.00	30,775	371.00	31,956	369.00	108,387	1,272.00
D			26,063	285.00	29,021	339.00	24,591	257.00	79,675	881.00
Total	66,152	727.00	128,091	1,497.00	126,921	1,515.00	128,037	1,480.00	449,201	5,219.00

Hold 1- 4 Legenda

Non insulated Deck, air passes through (aka Spar Deck)

Insulated, air tight Deck or Tanktop

Non Insulated, air tight Deck

Hatch sizes

	Hold 1	Hold 2	Hold 3	Hold 4
	l x b	l x b	l x b	l x b
Deck	7.35 x 6.00	8.10 x 6.00	8.10 x 6.00	8.10 x 6.00
UPD	7.30 x 6.00	8.10 x 6.00	8.10 x 6.00	8.10 x 6.00
A	7.30 x 6.00	8.10 x 6.00	8.10 x 6.00	8.10 x 6.00
B	7.30 x 5.20	8.10 x 6.00	8.10 x 6.00	8.10 x 6.00
C		8.10 x 6.00	8.10 x 6.00	8.10 x 6.00

Container Carrying Capacity

	Max FEU's	Add. TEU's	Max TEU's	Add. FEU's
<u>On Weather Deck and Hatches</u>				
Empty Positions	Standard	0	0	0
Max Stackweight	Standard	0	0	0
Max Stackweight - Self-sustained	Standard	0	0	0
<u>Reefer Hold</u>				
Empty Positions	Standard	0	0	0
Max Stackweight	Standard	0	0	0
Max Stackweight - Self-sustained	Standard	0	0	0

'Max Stackweight' and 'Max Stackweight - Self-sustained' are the number of laden containers that can be loaded basis the maximum stackweight, calculating 26 mt gross for a laden FEU and 14 mt gross for a laden TEU

Above figures are as per vessel's technical layout. Actual container intake is subject to master's approval and depending on stability, stackweight and visibility.



EVEREST BAY

449,201 cbft / 5,219 sqm / 3,954 pallets

Standard Voyage Container Carrying Capacity

Nr of High Cube (9.5') Reefers	0
of which Selfsustained	0

'Standard Voyage' = voyage from Panama Canal to Rotterdam, with a full cargo of bananas in the holds and departing with full bunker tanks. Containers on this voyage are considered to weigh 26 mt gross.

Reefer Plugs

Nr. of electrical Reefer Plugs	0
--------------------------------	---

Cargo Gear

8 Derricks x 5.0 mt or 4 x 3.5 mt in Union Purchase



EVEREST BAY

449,201 cbft / 5,219 sqm / 3,954 pallets

Speed & Consumption

Ballast				Draft condition	Forward: 5.00	Aft: 5.00
<u>Speed</u>	<u>ME HFO</u>	<u>ME MGO</u>	<u>Slow Steaming</u>			
16.50	17.50	0.00	No			
19.50	23.50	0.00	No			
Ave. aux. cons. excl. reefer containers						
	<u>A/E's</u>	<u>Boiler</u>				
HFO	2.00	0.00				
MGO	0.00	0.00				
Banana Laden				Draft condition	Forward: 5.00 - 8.20	Aft: 5.00 - 8.20
<u>Speed</u>	<u>ME HFO</u>	<u>ME MGO</u>	<u>Slow Steaming</u>			
15.50	17.50	0.00	No			
18.50	24.50	0.00	No			
Ave. aux. cons. excl. reefer containers						
	<u>A/E's</u>	<u>Boiler</u>				
HFO	4.50	0.00				
MGO	0.00	0.00				
Frozen				Draft condition	Forward: 8.20 - 9.00	Aft: 8.20 - 9.00
<u>Speed</u>	<u>ME HFO</u>	<u>ME MGO</u>	<u>Slow Steaming</u>			
15.00	17.50	0.00	No			
17.50	24.50	0.00	No			
Ave. aux. cons. excl. reefer containers						
	<u>A/E's</u>	<u>Boiler</u>				
HFO	4.00	0.00				
MGO	0.00	0.00				
General Cargo				Draft condition	Forward: 5.00 - 8.20	Aft: 5.00 - 8.20
<u>Speed</u>	<u>ME HFO</u>	<u>ME MGO</u>	<u>Slow Steaming</u>			
15.50	17.50	0.00	No			
18.50	24.50	0.00	No			
Ave. aux. cons. excl. reefer containers						
	<u>A/E's</u>	<u>Boiler</u>				
HFO	2.00	0.00				
MGO	0.00	0.00				
In Port						
	Ave. aux. cons. excl. cargo			Reefer Plant		
	<u>A/E's</u>	<u>Boiler</u>		<u>A/E's</u>		
HFO	1.50	0.50	+	2.50		
MGO	0.00	0.00		0.00		



EVEREST BAY

449,201 cbft / 5,219 sqm / 3,954 pallets

- All speeds are 'about', all consumptions are 'about', basis clean hull, clean propeller and deep (minimum 7 x deepest draft), currentless water/sea with a temperature of maximum 28 degree Celcius.
- Descriptions are given basis maximum Beaufort 4, maximum 2 meters combined swell and wave height.
- Additional MGO may be used for starting/stopping engines and/or manouvring and/or in narrow and/or restricted waters and/or in extreme weather conditions.
- All auxiliary consumptions are based on maintaining cargo temperatures, during reduction period higher consumptions may be recorded.
- All descriptions exclude consumption for carried laden reefer containers. Depending on ao the make and/or type of container, maintenance state of the container, commodity in the container, ambient temperature, use of water cooling, stowage position: as indication an average additional fuel consumption of about 30 kg/container/24hrs when maintaining temperatures to be taken into account.
- Port consumptions are averages for vessel lying alongside berth. Manoeuvring consumptions are excluded.
- Auxiliary consumption up to 8 mt/day with all generators fully loaded.
- All Speeds are in knots and all consumptions are in metric tons per 24 hours.
- International and/or local regulations, such as but not limited to ECA's, may require use of other fuel grades than specified.
- Conditions are based on sailing with even keel, unless stated otherwise. Significant trim, especially large negative trim, may have negative impact on the performance.
- All consumption figures are based on ISO 8217 (latest revision) specification fuels with following minimum caloric values:
HFO: 40.600 kJ/kg
MGO 42.700 kJ/kg

Bunker Tank Capacities

	<u>Cbm (100%)</u>	<u>Cbm at max filling level*</u>	<u>mt**</u>
VLS	1,117	924	916
Total bunker capacity for RMG380 (IFO380)	1,117	924	916
Overflow/Settling/Daytanks for DMA (MGO)	65	0	0
ULS	222	189	179
Total bunker capacity for DMA (MGO)	287	189	179

*) Vessel shall not mix bunkers from different bunkerings in 1 bunker tank. This may reduce the actual bunker capacity.

**) Capacity in mt serve as indication only. Actual capacity in mt depending ao on the specific gravity and temperature of the supplied bunkers.

Vessel to be solely supplied with fuels as per ISO 8217:2010 or any subsequent amendment thereof. All supplied fuels shall be suitable to enable main propulsion and auxiliary machinery to operate efficiently and without harmful effects and in line with any national and/or international requirements. Fuels to be mineral based products and shall not contain waste lubricants (ULO), chemicals or any other harmful substances and shall be of homogenous and stable nature. Charterers to buy and arrange bunkers only from qualified suppliers and/or from majors and carry out their own quality checks as deemed necessary for their control.

Charterers warrant that whenever bunkers are ordered for the vessel, the order not to put a lien on the vessel and explicitly request "The Products shall not include waste chemicals, waste lubricants and/or other non-fuel components."

BIMCO Bunker Fuel Sulphur Content clause for Time Charter parties 2004 to apply.

If vessel is redelivered in an ECA area, Charterers warrant that vessel will be redelivered with sufficient bunkers suitable for consumption as per the requirements of the relevant ECA area to reach a port or place where suitable bunkers may be supplied.

Vessel participates in fuel testing program. Samples are taken during each fuel from each supplied grade. Costs involved to be equally shared between Owners and Charterers. Vessel shall not consume any supplied fuel without having received full fuel analysis report confirming the fuel's quality.

It is Charterers obligation to make sure that fuels with sulphur content higher than 0.5% are either consumed or removed from the vessel at his cost prior 01 January 2020.

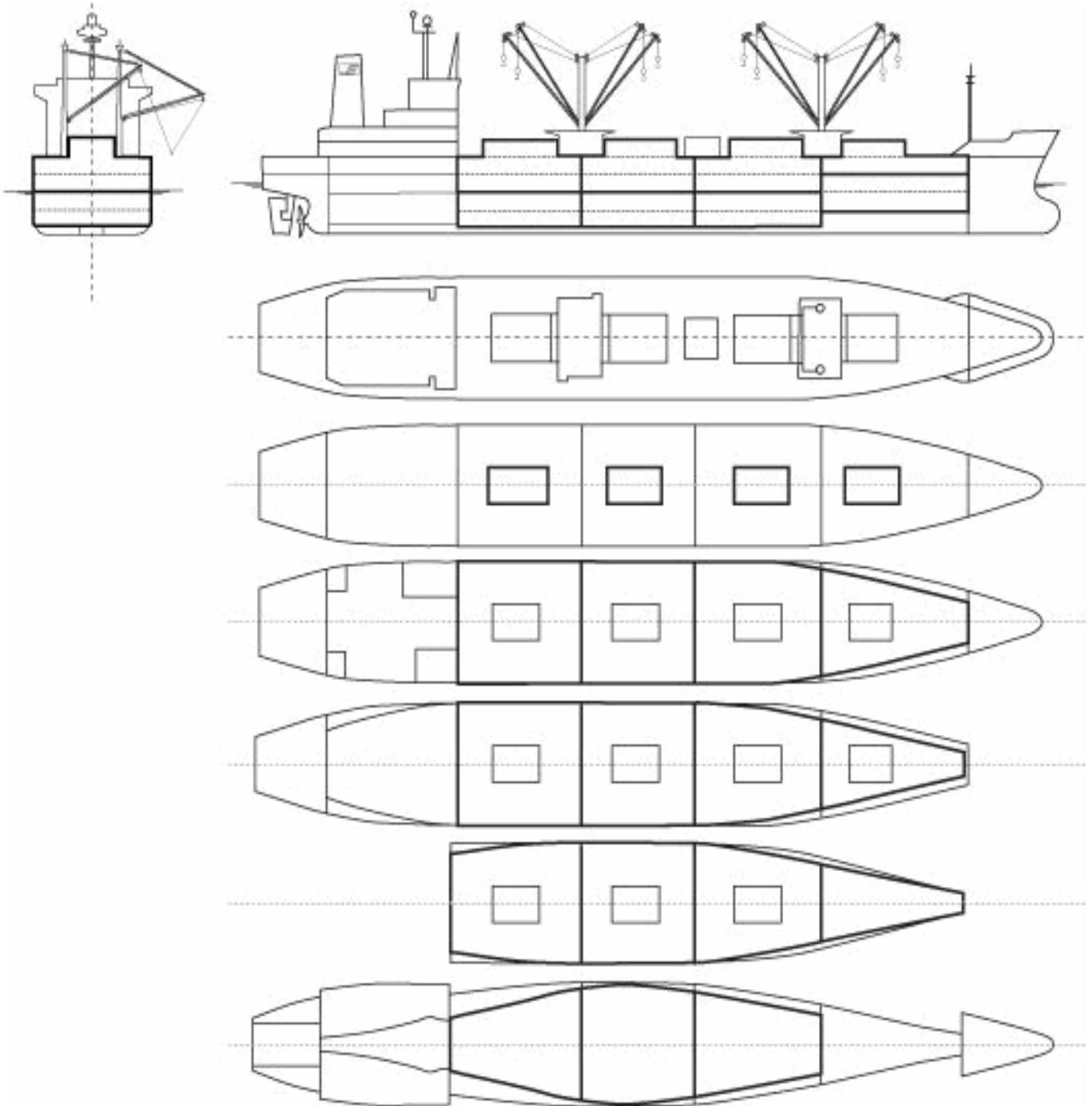


EVEREST BAY

449,201 cbft / 5,219 sqm / 3,954 pallets

Communication Details

Communication type	System	Communication number / Comments
Mail	E-Mail	master.everestbay@seatradefleet.com
Mail	Satcom-C	463792240@c12.stratosmobile.net
Phone	Mini-M	+870 773 158 571
Phone	Mobile Phone	+31 651 294 346
Fax	Mini-M	+870 783 202 036
Telex	Satcom-C	+580 463 792 240



EVEREST BAY

449,201 cbft / 5,219 sqm / 3,954 pallets

General Remarks

- Pallet Intake figures are indication only. The figures are based on a stowage factor of 1.32 pallet/sqm in reefer holds, full load of reefer containers based on the standard voyage with 20 pallets in each container

